

Intel® Skills For Innovation Initiative

Gehad Galal

Director, Education Strategy & Programs,
Intel Corporation

intel®



Notices and Disclaimers

Performance varies by use, configuration and other factors. Learn more at www.Intel.com/PerformanceIndex.

Intel technologies may require enabled hardware, software or service activation.

Your costs and results may vary.

No product or component can be absolutely secure.

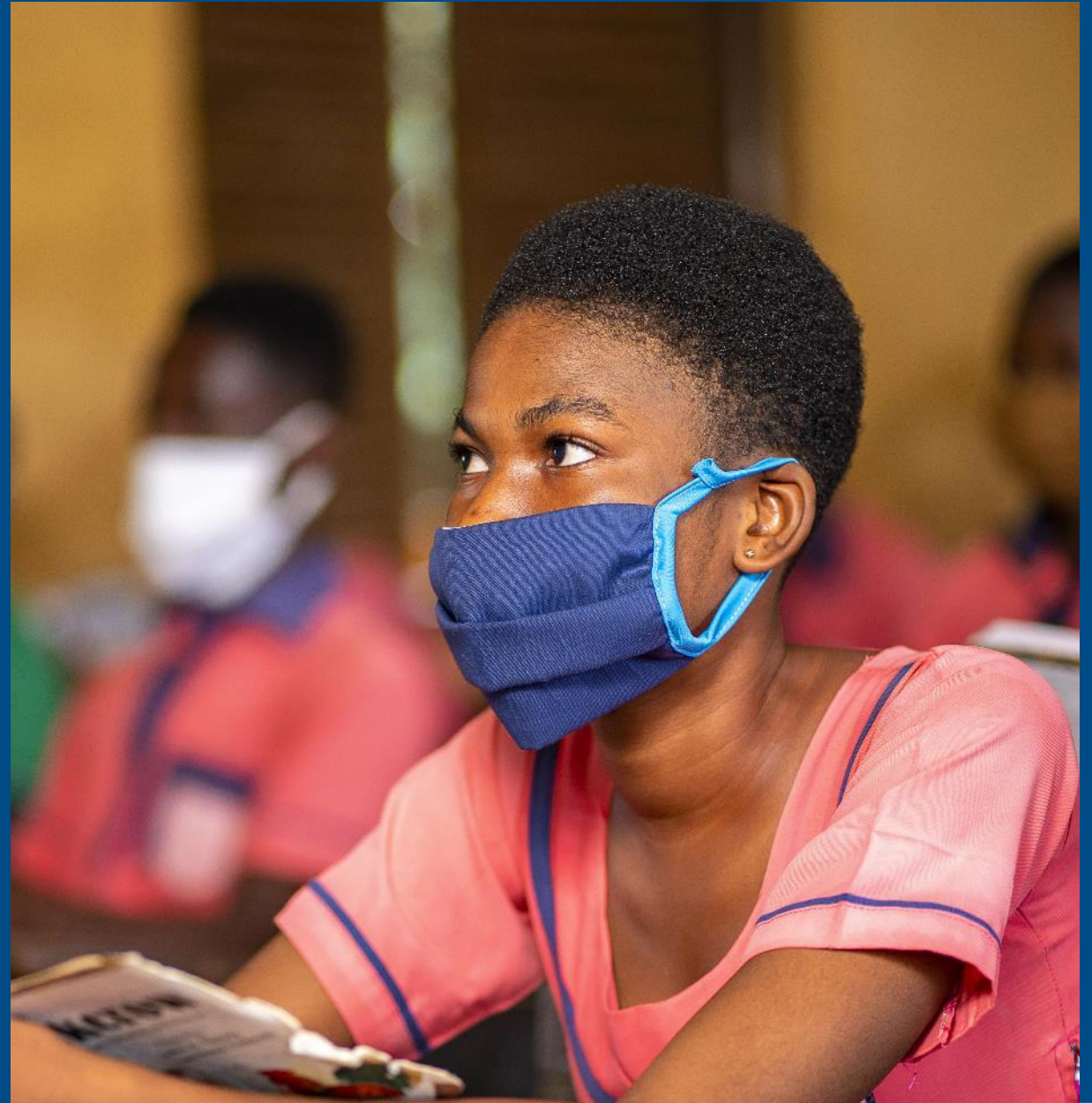
Intel does not control or audit third-party data. You should consult other sources to evaluate accuracy.

© Intel Corporation. Intel, the Intel logo, and other Intel marks are trademarks of Intel Corporation or its subsidiaries. Other names and brands may be claimed as the property of others.





The Pandemic Impact



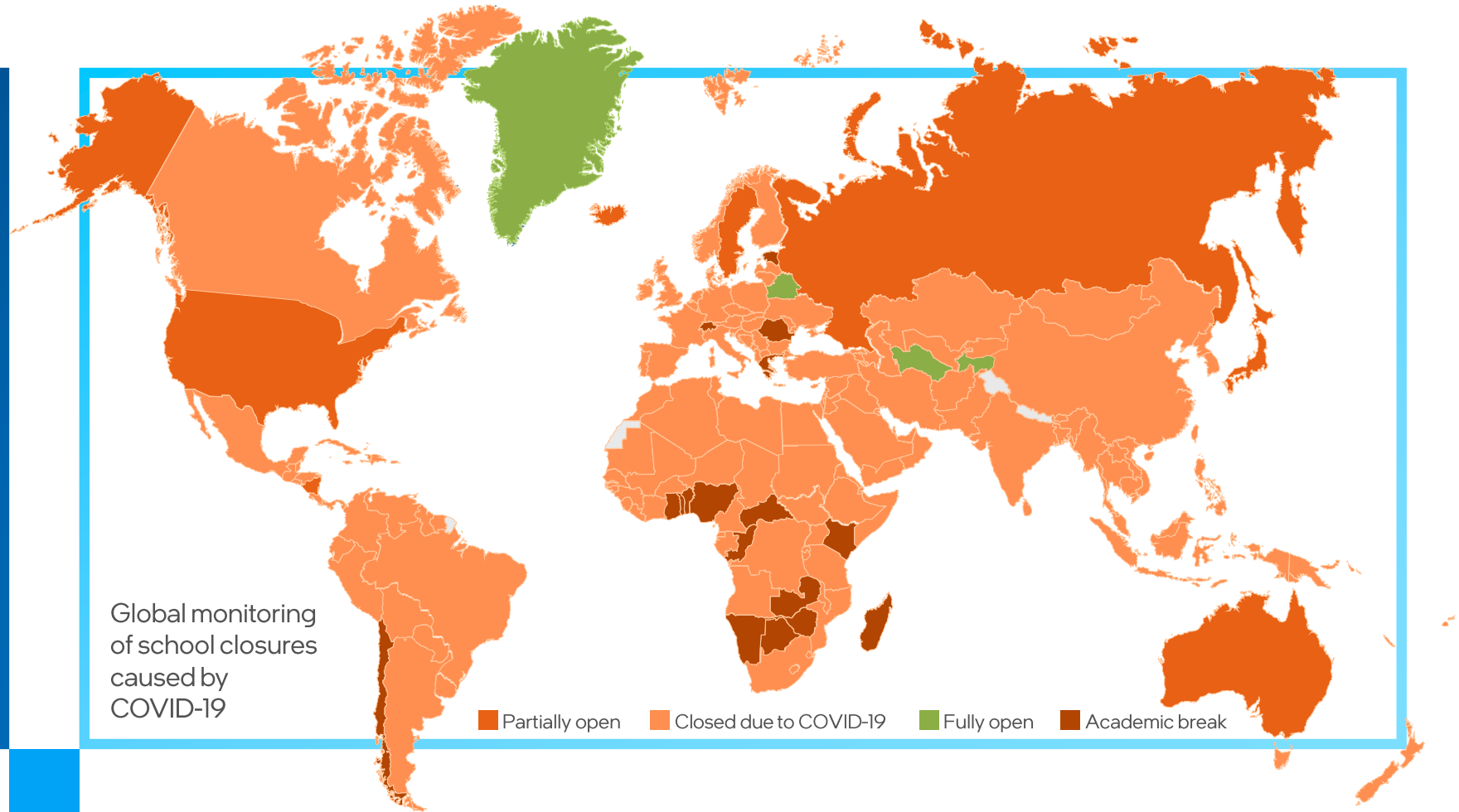
2020/2021: Challenging Years

1,470,000,000
affected
learners

161
country wide
closures

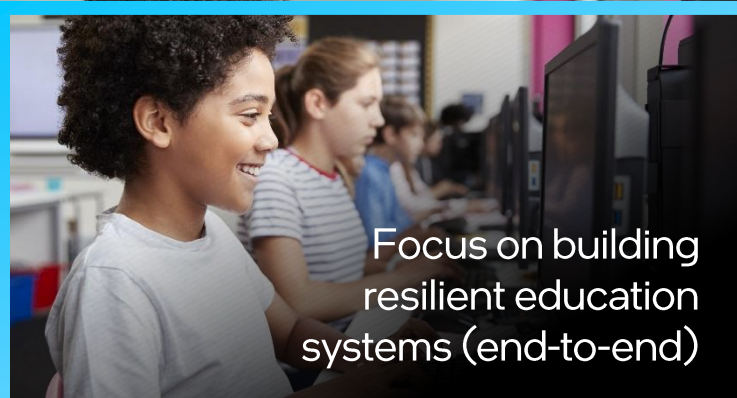


Global monitoring
of school closures
caused by
COVID-19



Emerging Priorities for Education Decision Makers

COVID-19 caused school closures impacted over **1.5B** students worldwide.
Approximately 463 million students, **1 in 3**, lack adequate access (digital or broadcast) for distance learning ⁽¹⁾.



The Learning loss of 2020 will impact countries GDP by up to 1.5% for the rest of the century.⁽²⁾

Sources: 1. <https://data.unicef.org/resources/remote-learning-reachability-factsheet/> 2. <https://www.oecd.org/education/The-economic-impacts-of-coronavirus-covid-19-learning-losses.pdf> (page 12)





Plan for the Future ... NOT the future Pandemic



Economic, Technology & Societal Trends Impacting Education Now and, in the Future,

Acceleration of the Digital Economy



Covid-19 pandemic accelerated and brought forward the digital transformation of companies by up to

7 years

in just a few months¹

Working from Anywhere, Competing in a Global Marketplace



More than

80%

of organizations surveyed plan to permit employees to **work remotely** at least part of the time going forward²

The Race for Artificial Intelligence



88%

of SMBs and

80%

of large companies say AI technology helped their company during the COVID-19 outbreak.³

Fourth Industrial Revolution Driving Massive Changes in Jobs & Skills Requirements



With the 4th Industrial Revolution, labor markets are transforming⁴

85 million

Declining roles, global change by 2025

97 million

Emerging roles, global change by 2025

Need for Equity in Education



60%

of low-income students regularly log into online instruction⁵ vs.

90%

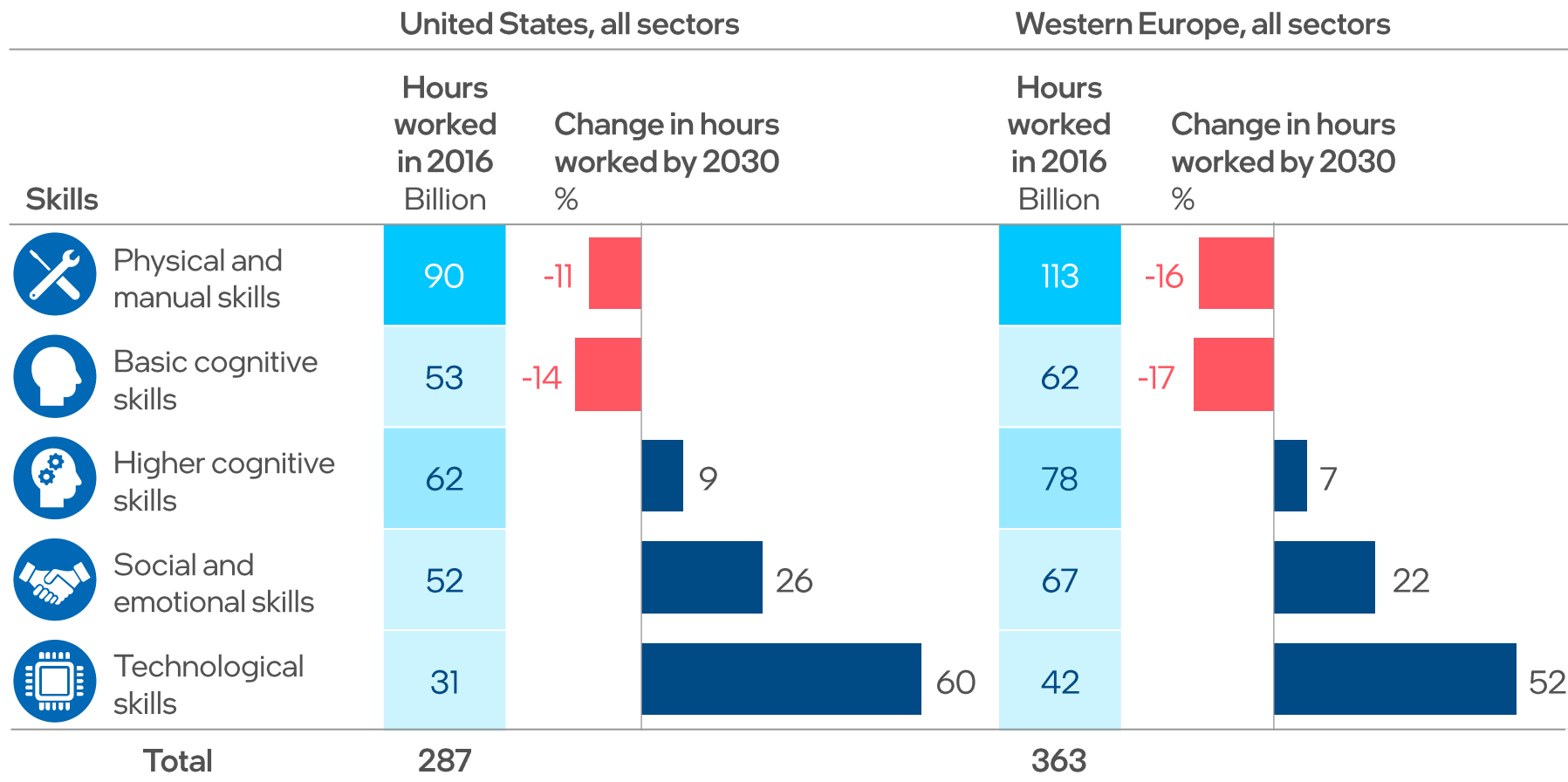
of high-income students⁵

1. mckinsey.com/business-functions/strategy-and-corporate-finance/our-insights/how-covid-19-has-pushed-companies-over-the-technology-tipping-point-and-transformed-business-forever; 2. hrdive.com/news/gartner-over-80-of-company-leaders-plan-to-permit-remote-work-after-pande/581744/; 3. info.kpmg.us/news-perspectives/technology-innovation/thriving-in-an-ai-world/ai-adoption-accelerated-during-pandemic.html; 4. Saadia Zahidi et al. The Future of Jobs Report 2020 (World Economic Forum, 2020) www3.weforum.org/docs/WEF_Future_of_Jobs_2020.pdf

5. mckinsey.com/industries/public-and-social-sector/our-insights/covid-19-and-student-learning-in-the-united-states-the-hurt-could-last-a-lifetime



The Future Demands a New Set of Skills



Source: Exhibit from "Skill shift: Automation and the future of the workforce", May 2018, McKinsey Global Institute, www.mckinsey.com. Copyright (c) 2020 McKinsey & Company. All rights reserved. Reprinted by permission.

Note: Western Europe; Austria, Belgium, Denmark, Finland, France, Germany, Greece, Italy, Netherlands, Norway, Spain, Sweden, Switzerland, and the United Kingdom. Numbers may not sum due to rounding.



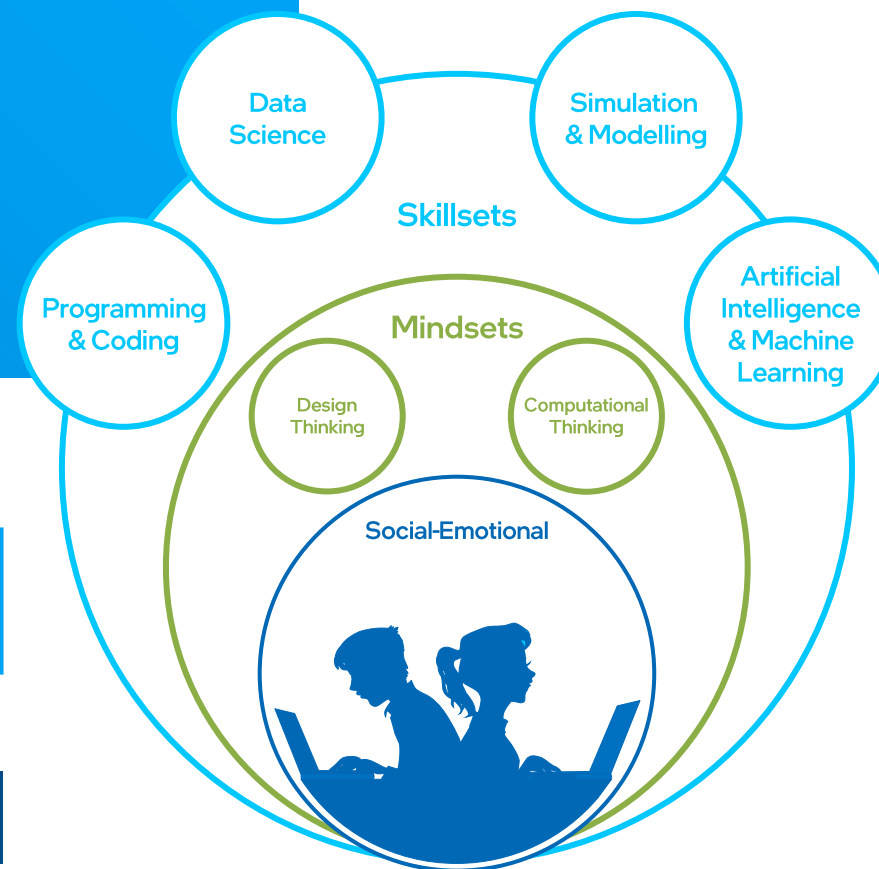
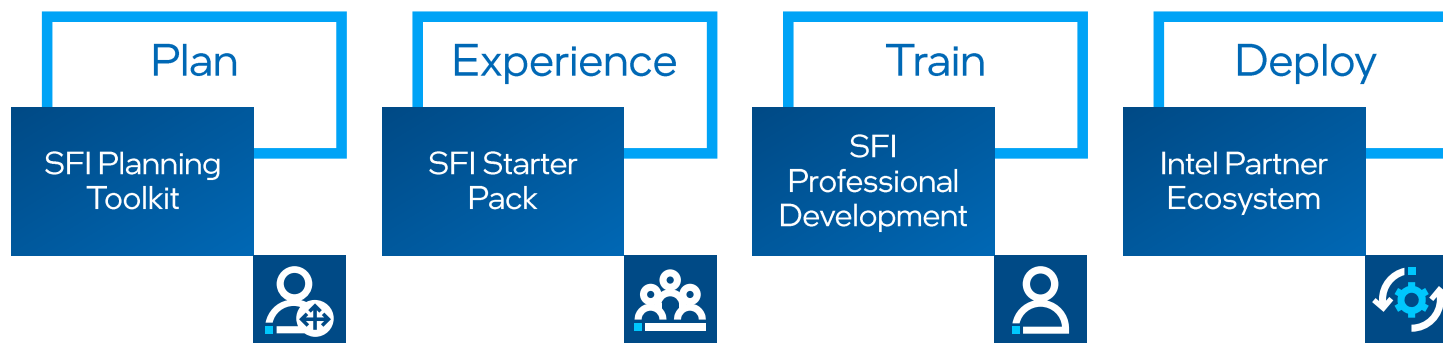
Intel® Skills for Innovation Initiative

Reinventing Technology's Role in Education to Empower Students to Become the Next Generation of Innovators

Intel® SFI goals:

- Reinvent the role of technology to improve education system resilience
- Use technology to foster students' higher-order thinking and skills development
- Use technology to apply curriculum concepts and tie to real-world problem solving

Adoption Framework & Programs



Targeted Mindsets & Skillsets





Intel® SFI Planning Toolkit

For Decision Makers

Designed to equip decision makers with the tools to understand the near-term, medium-term, and long-term trends impacting education so that they can plan for a more resilient education system.

Planning Workbook

The Intel SFI Planning Toolkit includes a workbook that is continuously being updated and expanded. Currently the workbook consists of five chapters:



- Chapter 1:** The Future of Education
- Chapter 2:** Adopting A New Vision for Education
- Chapter 3:** Enhancing Education System Resilience
- Chapter 4:** Bridging the Industry Skills Gap
- Chapter 5:** Developing an Action Plan

Facilitated Workshops/Webinars

One-to-three-hour workshops are available, either in person or virtually, by experts to facilitate the planning process and customize the contents to fit your needs



- Exercise 1:** Trends Identification & Selection
- Exercise 2:** Futures Triangle/SMART Goals
- Exercise 3:** Resilience Self-Assessment
- Exercise 4:** Technology for Skill Building
- Exercise 5:** Creating an Action Plan

Anticipate, Prepare, Respond, and Adapt to Future Changes



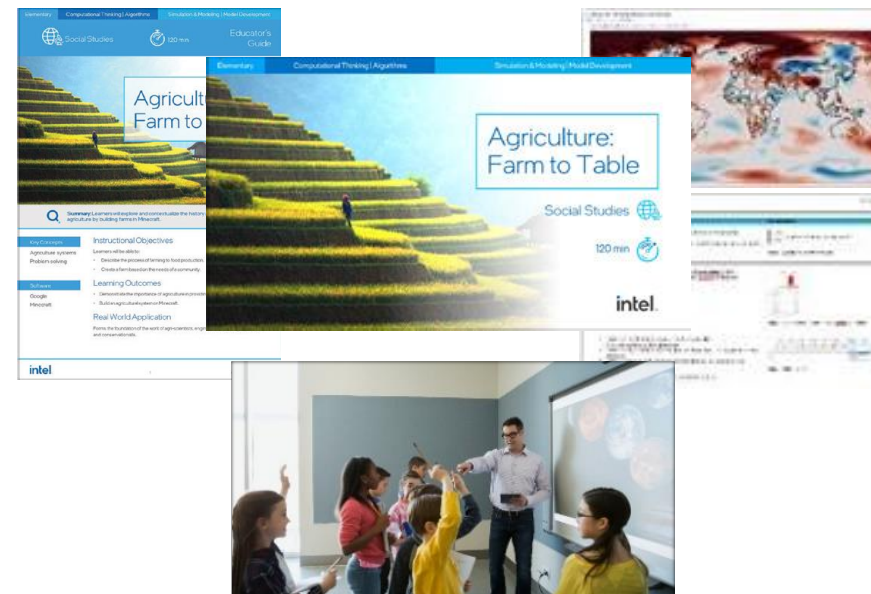


Intel® SFI Starter Pack

For Educators & Students

Lead digital learning experiences and facilitate future skill-building

A growing library of pre-designed, technology-infused activities covering a wide range of grades and subjects. These activities—currently 70, providing 140 hours of content—cover STEM, language, and humanities, and gradually increase in complexity to build students' mindsets and skills as they move to higher grades.



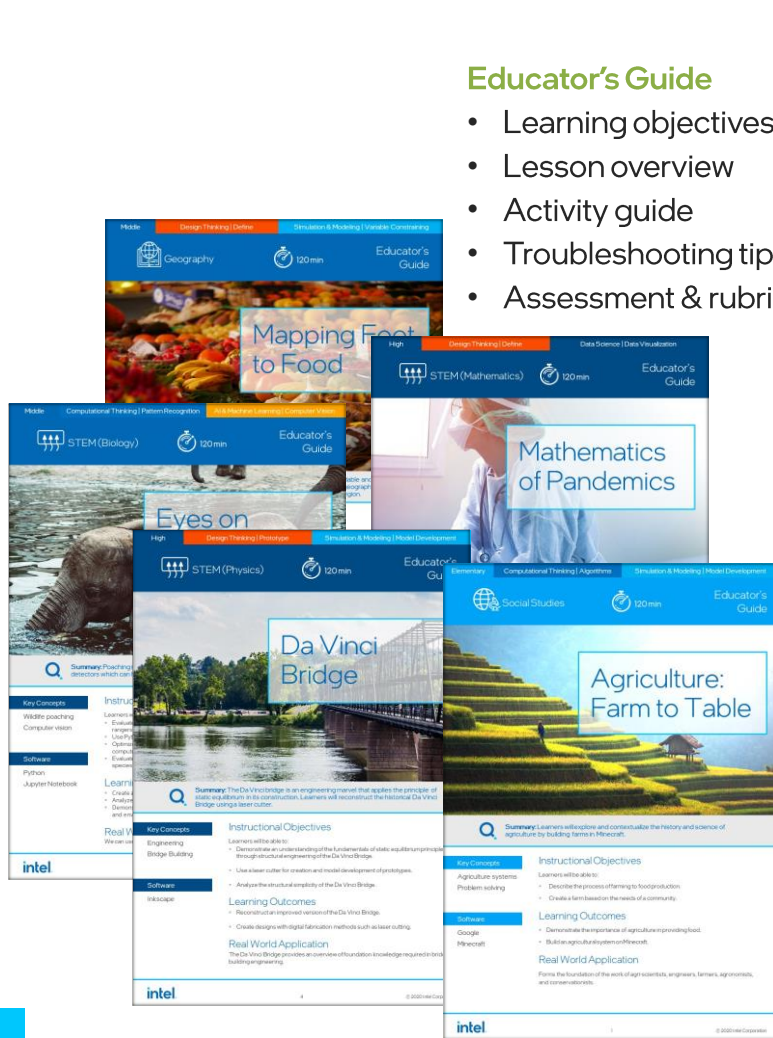
Enable Educators to effectively integrate Technology in Education to build their students future-ready mindsets and skillsets



Intel® SFI Starter Pack Components

Educator's Guide

- Learning objectives
- Lesson overview
- Activity guide
- Troubleshooting tips
- Assessment & rubrics



Teaching Deck

- Introduction to topic
- Hands-on activities
- Guided learning
- Discussion topics
- Reflection

Working Files

- Worksheets
- Installation guides
- Applications
- Source files or codes
- Data sets





Intel® SFI Professional Development

For educators

Adapter



Adapter of Technology

Support educators who are new to technology in building a strong foundation for basic digital fluency through a mix of F2F and supervised, online modules.

Owner



Leader of Learning Experiences

Help educators transition from being content experts to becoming effective owners and leaders of learning experiences in anywhere learning scenarios.

Catalyst



Catalyst of Creative Confidence

Enable educators to reimagine learning experiences with technology to empower students to become confident innovators.

Mentor



Mentor Upgraded Mindsets

Introduce educators to the upgraded mindsets that are essential for students to thrive in the 4th Industrial Revolution and successfully navigate unknowns of tomorrow.

Goal

Achieve student readiness for the 4th Industrial Revolution and beyond.

New Professional Development Suite

Intel® SFI Professional Development provides more than 80 hours of e-learning and in-person workshops and uses a model consisting of four levels that transition educators from adapters of technology to mentors of innovation.

Get Educators Ready for the Future of Education

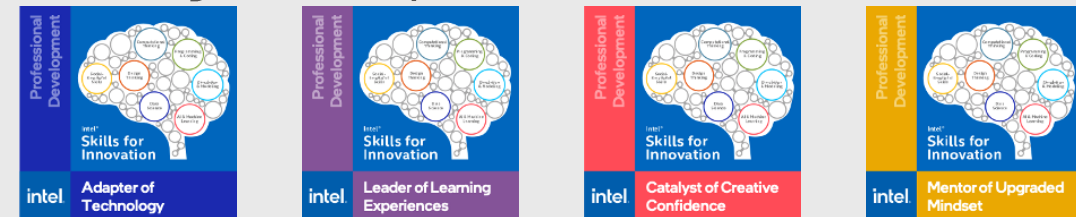


Intel SFI Educator Certification

- A Course Certificate of Completion is awarded to educators who complete each course. To complete each course, educators will have to complete all courselets and tasks assigned.
- A Level Certificate of Completion is awarded to educators who complete all courses within a level.
- Badges are also awarded to educators who complete courses and levels. These badges can be shared on social media and digital portfolios.



Level Badges – On completion of each level



* Each course contains 3 courselets



Intel® Skills for Innovation



Thank You



The Intel logo is centered on a solid blue background. It features the word "intel" in a white, lowercase, sans-serif font. A small, light blue square is positioned above the first vertical stroke of the letter 'i'. To the right of the word "intel" is a small white registered trademark symbol (®).

intel®